

Camp Locations

Oaklyn/Potomac Center

10500 Oaklyn Drive
Potomac, MD 20854

Trinity/Rockville Center

11200 Old Georgetown Road
Rockville, MD 20852

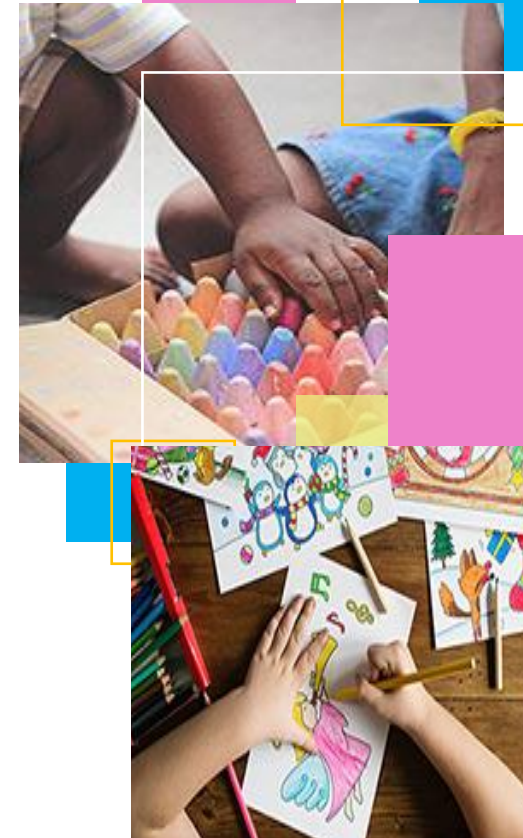
Toddler Program

The Toddler program is for children age 2 years. This program is available as a half day or full day. Your children do not need to be potty trained. The toddler program is led by experienced teachers and is specifically designed for the two-year-old child, as their first school experience. Each day the toddlers will enjoy Montessori lessons and playtime, snack time, outside playtime, story time, singing and movement, and age appropriate arts and craft projects. Outdoor water play is scheduled one day a week.

Primary Program

The Primary program is for children ages 3-5 years. The Primary children must be potty-trained. This program is available as a half day or full day. Campers participate in a variety of activities including Montessori lessons, thematic weeks, sports, arts and crafts, water play, movement, sewing, outdoor free play, games, and Zumba.

The Manor Montessori Summer Day Camp 2021



About Our Camp

The Manor Montessori School has been serving families in the Washington area for fifty-nine years. Our camp program combines use of Montessori apparatus to reinforce lessons taught during the school year with the fun of arts and crafts, music, movement, virtual field trips, and outdoor activities, such as, water play, sports, and Zumba.



Junior Program

The Junior Program is for children ages 6-8 years and offers a variety of exciting activities for the older child. The Junior Class is only available at our Oaklyn/Potomac Center, and as a full day option. The children will participate in Montessori lessons, thematic weeks, arts and crafts, sewing, sports, Zumba, outdoor play, water play and virtual field trips.

The Manor Montessori Day Camp

PO Box 60691

Potomac, MD 20859-0691

(301) 299-7400

www.manormontessori.com

themanormontessori@gmail.com

manorsummercamp@gmail.com

Registration

Please submit a Summer Camp Application, along with all necessary health and emergency forms. Manor families and alumni receive priority. Admission is on a first-come, first-serve basis.

Payments

A non-refundable \$100.00 deposit is due with the application and applied to the first week's tuition. There is a 10% discount for siblings. The entire balance for camp is due before the first day of camp. Payments can be made by check to our main office or credit card & ACH bank transfer through your SchoolCues account. No tuition refunds will be made due to absence or withdrawal during a camp session.



"Learn to love, To do well, And you shall!"

2021 Camp Tuition Rates

Toddlers (2 years old)

9:00-12:00/5 days a week: \$350 per week

9:00-3:00/5 days a week: \$425 per week

Primary (3-5 years old)

9:00-12:00 \$325 per week

9:00-3:00 \$400 per week

Junior (6-8 years old)

Oaklyn Center Only

9:00-3:00 \$425 per week

2021 Session Dates

Week 1: June 14-18

Week 2: June 21-25

Week 3: June 28-July 2

Week 4: July 5-9

Week 5: July 12-16

Week 6: July 19-23

Week 7: July 26-30

Week 8: August 2-6

Week 9: August 9-13